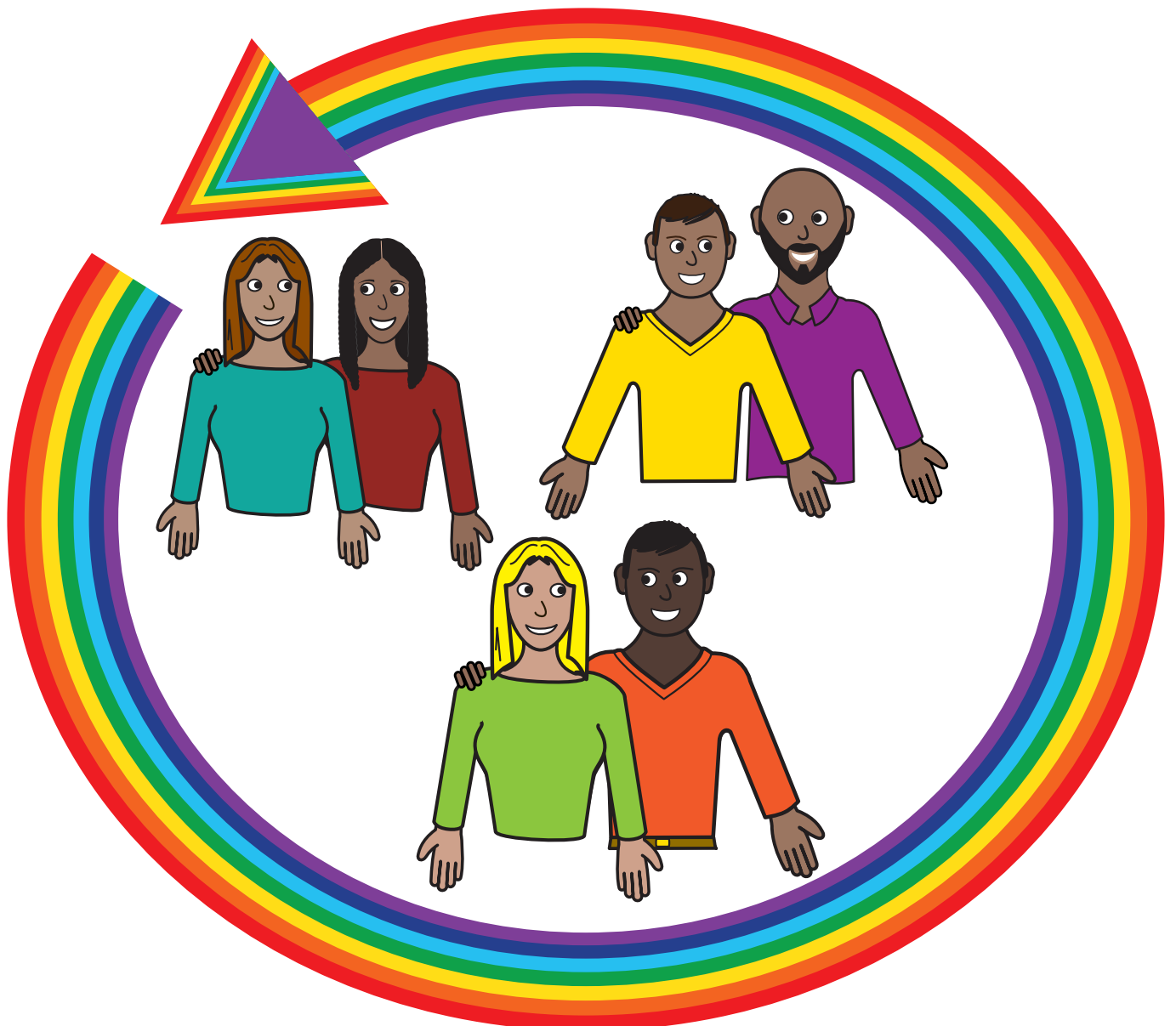


# What's your sexuality?

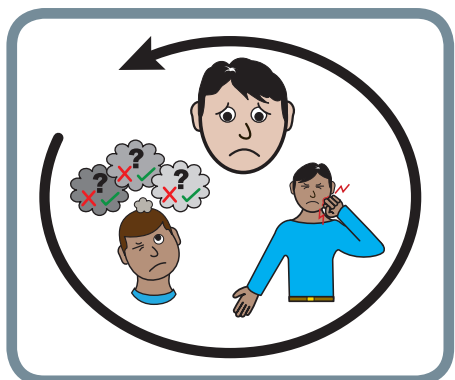
Sexual Orientation Monitoring of our service users



## Why ask about my sexuality?

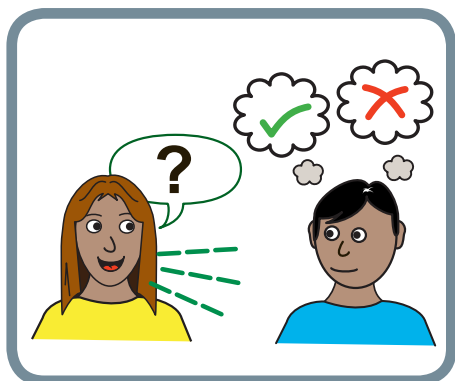


The Rainbow Alliance want to improve services for the lesbian, gay, bisexual and transgender community.



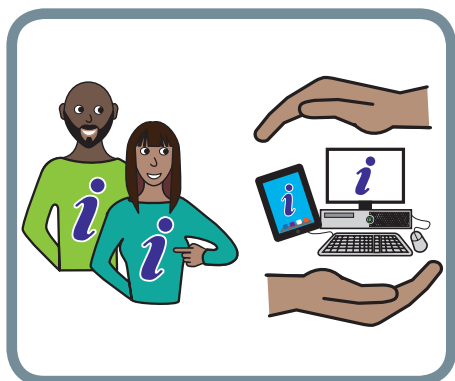
Lesbian, gay and bisexual (LGB) people are have a higher risk of; mental health problems, increased risk of self harm and suicide, and poorer physical health.

Lesbian, gay and bisexual people are more likely to become isolated and unsafe.

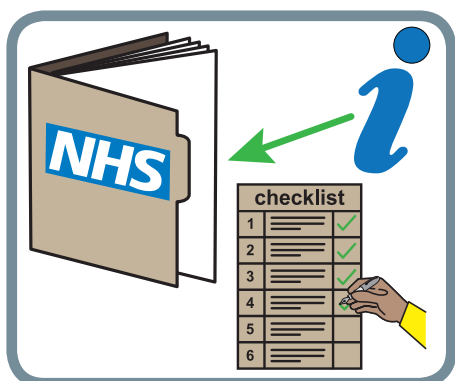


We need to understand a persons sexuality so that we can support people better and meet their needs.

## How will LYPFT be introducing this?



Sexual orientation data is now included within NHS Information Standards.

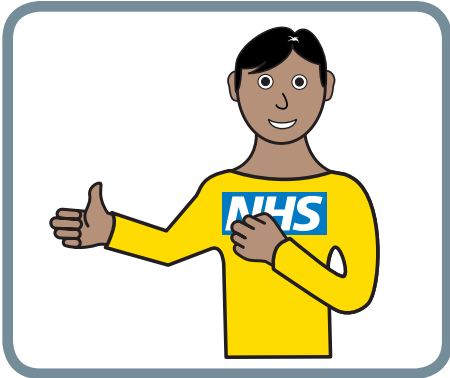


By referring to guidance from NHS England, we plan to introduce a system for recording the sexual orientation of all service users aged 16 years and above.



Sexual Orientation Monitoring will be introduced from 1st October 2018. This will promote LGB equality. It will allow us to know about health risks and will help support people better.

Asking about sexuality of our service users will support our organisation to comply with the Equality Act (2010).



Above all, Leeds and York Partnership NHS Foundation Trust are bringing in Sexual Orientation Monitoring earlier than the NHS mandate we want to know and understand our service users and support people better.

The question staff will be asking our service users has been worded to base on the fact that sexual orientation is about a person's identity rather than sexual partners:



**Which of the following options best describes how you think of yourself?**



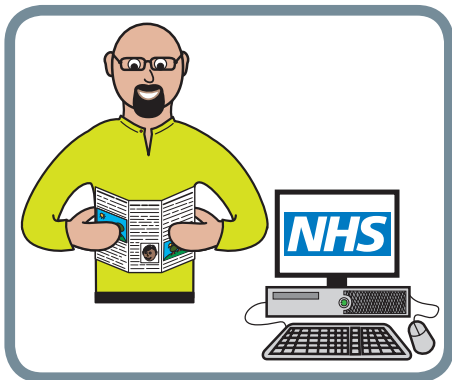
1. Heterosexual or Straight
2. Gay or Lesbian
3. Bisexual
4. Other sexual orientation not listed
5. Person asked and does not know or is not sure
6. Not stated (person asked but declined to provide a response)
7. Don't know (not recorded)



## What about my personal data?

Our electronic patient record system will include an option where sexuality can be recorded.

This data will be classed as 'Special Category Data' in law and will be treated as confidentially as all other healthcare data. It is only accessible to LYPFT staff on a 'need to know' basis and direct access to your patient record is only given to the staff who are directly involved in your care at any given time.

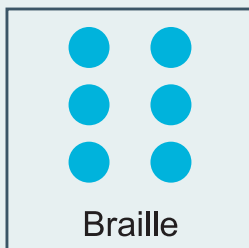


## Further reading

[www.england.nhs.uk/wp-content/uploads/2017/10/sexual-orientation-monitoring-full-specification.pdf](http://www.england.nhs.uk/wp-content/uploads/2017/10/sexual-orientation-monitoring-full-specification.pdf)  
[fibt.foundation/downloads/4](http://fibt.foundation/downloads/4)

## Would you like this information in an alternative format?

For a translation of this document, an interpreter, a sign language interpretation or a version in:



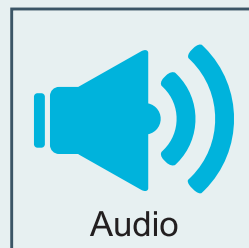
Braille

or



Large Print

or



Audio

or



Easy Read

please contact the Interpretation and Translation Support Team on **0113 85 56418/9** or [translation.lypft@nhs.net](mailto:translation.lypft@nhs.net)