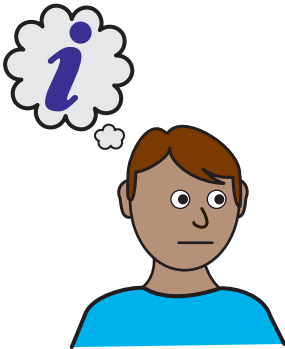
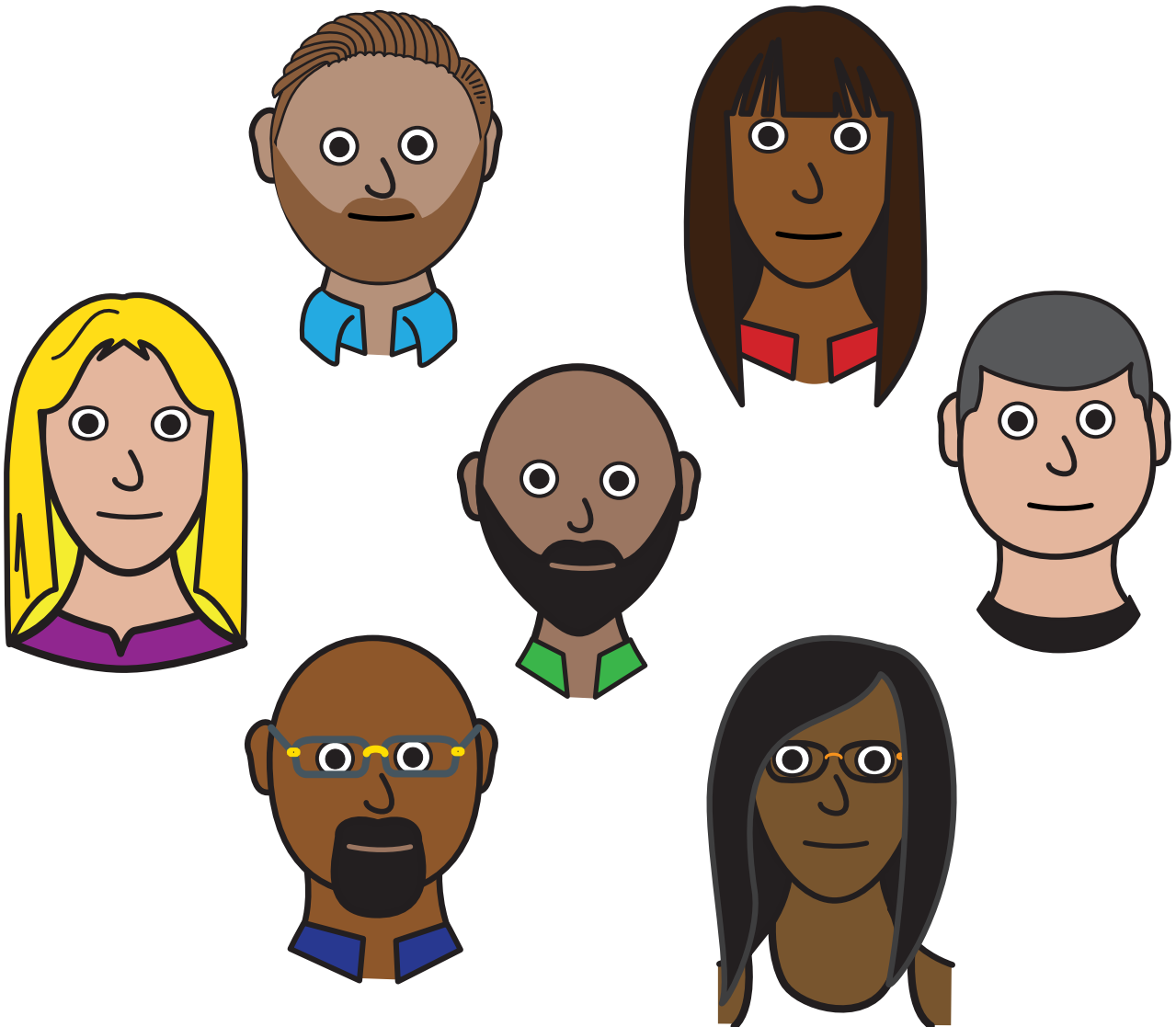
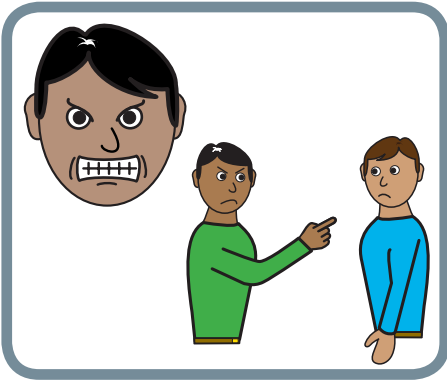


Learning Disability
Services



What is racism and sexism

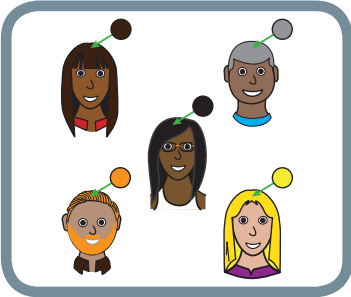




Discrimination means being unkind or nasty to someone because of certain things like:



- skin colour



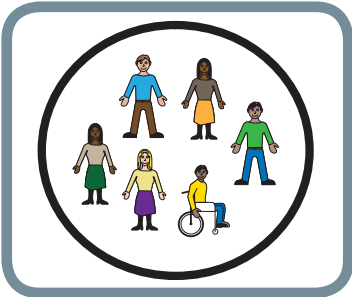
- Your hair colour



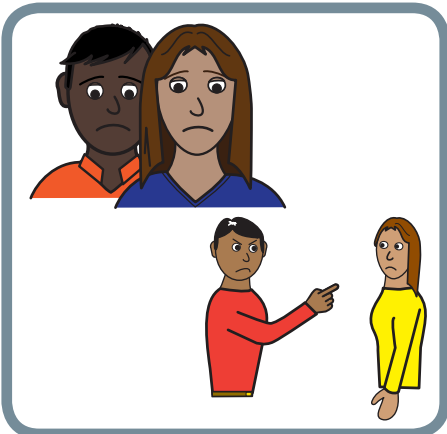
- Your looks



- Your age

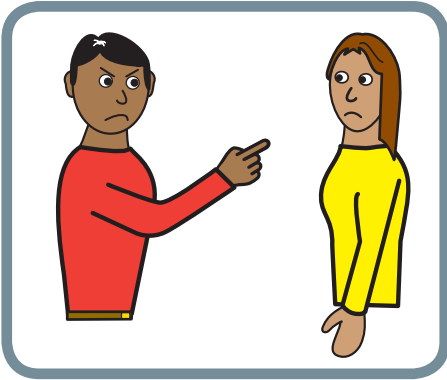


- Your disability



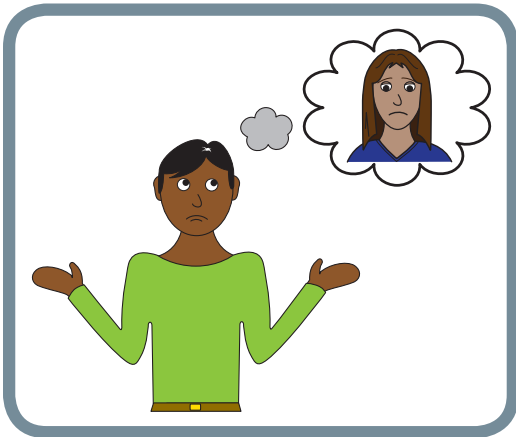
Sometimes people are unkind or nasty to other service users or staff members

People are sometimes nasty to others like this because:



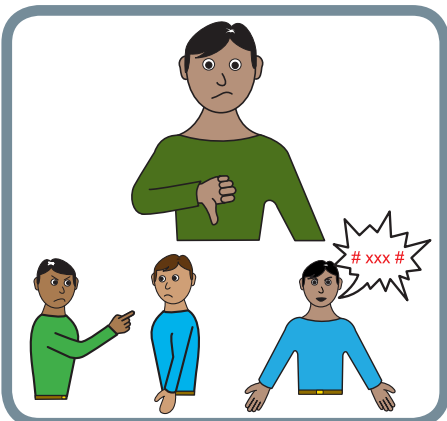
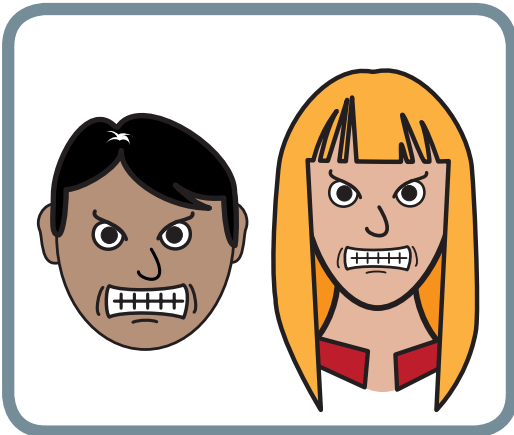
- They don't understand that it hurts

- They don't think about how other people feel



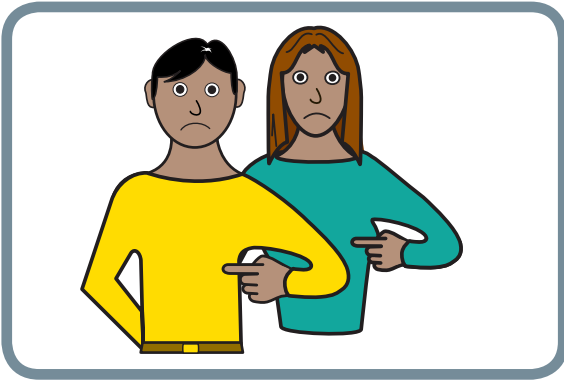
- They are angry

- They feel sad or upset and want to upset someone else.

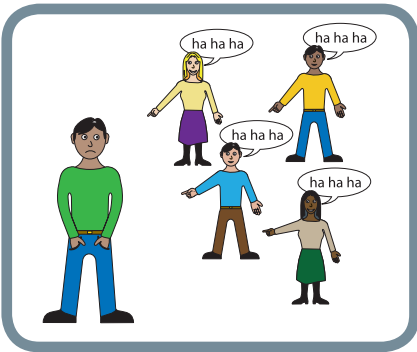


Being nasty to other people and being unkind is wrong. And we don't like it here.

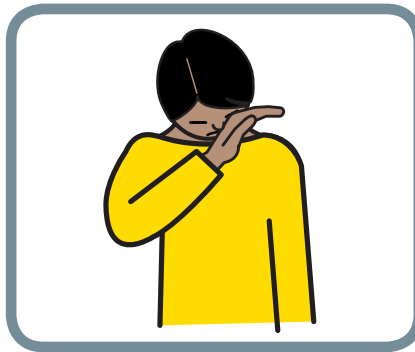
This is how it makes other patients or staff feel:



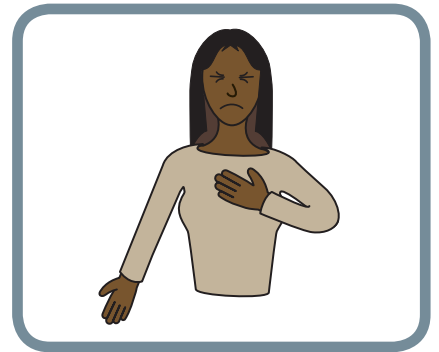
- It makes me feel belittled



- It make me feel like I don't matter



- Its hurts me



- I wonder why you are being cruel



- I feel frightened and it makes me want to cry



- I feel scared and I wonder if the person is going to hurt me and I worry about coming to work

